



## Melbourne Tutorials Junior Campus

Melbourne Tutorials Junior Campus is fully functional now. Located at 11/45 Tallis Cct, Truganina, the campus will cater to preschool groups and junior grades.

The classrooms are child friendly with low-lying furniture, colourful walls with attractive educational posters.

The junior campus is guided by Mrs Sindhu Randev, Director and supported by qualified educational staff.

## Selective Entry Exam 2022

The exam dates for Selective Entry have been announced:

**Year 9 entry: 23rd July, 2022**

**Year 10 & 11 entry: 8th June, 2022**

The examination includes ability and achievement tests and takes approximately three hours to complete. The examination is designed to test and challenge students.

The examination comprises five tests, in the following order:

1. **Verbal reasoning** (multiple choice, 30 minutes)
2. **Numerical reasoning** (multiple choice, 30 minutes)
3. **Persuasive OR creative writing\*** (writing task, 30 minutes plus 5 minutes planning time)

SHORT BREAK (approx. 20 minutes)

4. **Reading comprehension** (multiple choice, 30 minutes)
5. **Mathematics** (multiple choice, 30 minutes)

\* Whether or not students are presented with a persuasive or creative writing task varies from year to year, with all students required to complete the same task in any given year.



## Selective Entry Exam- Selection and offers process

Only students who sat the examination are eligible for selection to the Selective Entry High Schools. At Selective Entry High Schools, the majority of students (85 per cent) are accepted based on examination results only.

In addition, up to 10 percent of enrolments are through the equity consideration category and up to 5 per cent of enrolments can be made under the principal's discretion category. Noting the principal's discretion category can only be applied when the quota from any one source school has not been reached.

With the exception of the equity category, a quota applies to the number of Year 8 students from any one source school who can be accepted across the four Selective Entry High Schools.

No more than 4% of students are offered 'standard' places at Selective Entry High Schools from a single feeder school (excluding P-9 schools). The quota that applies to a P-9 school is up to 10%. Quotas apply to minimise the impact on feeder schools.

An illustrative example of the quota process is offered below. At ABC High School, the maximum number of standard offers that can be made is 4 based on 100 students enrolled at Year 8. The Principal Discretion Category cannot be used as the Year 8 quota for this school has been reached. However, offers can be made under the Equity Consideration category to eligible students as this category is not subject to the quota policy.

School name	Year 8 student enrolment	Standard Offers	Equity Offers	Principal's Discretion Offers	Total Offers
ABC High School	100	4	1	n/a	5
Example P-9 School	50	4	1	1	6

The entry score required for each school varies from year to year depending on the demand for places at the school and the scores achieved by those students who have listed the school as their first preference.

It should be noted that examination outcome reports are confidential and should not be compared with other students' reports as a range of factors are taken into consideration when making offers, for example, quotas on source schools, school preferences etc.

### Equity consideration category

Equity consideration helps ensure that all students have access to the same opportunities. Students are eligible for a place in the equity consideration category if they:

- have parents with either a Commonwealth Health Care Card or a Pension Card, and who qualify for income support benefits.
- identify as Aboriginal or Torres Strait Islanders on the application form.

### Principal's discretion category

The Principal of each Selective Entry High School has the authority to offer up to 5% of places under the principal's discretion category, as long as this does not exceed the Year 8 quota of students from any single school. Principals from each Selective Entry High School identify from the examination results those students who they wish to invite to submit an application under the principal's discretion category. These applications, including the due dates for submission, are handled by the individual schools.

An invitation to submit an application for a principal's discretion category is not an offer of a place at the school. The principals shortlist and interview students from the applications received, and make offers directly to students. If a student accepts an offer at a Selective Entry High School and receives an offer to apply for principal's discretion for a higher preference school, the student can retain the initial offer while the principal's discretion process is undertaken.

# Melbourne Tutorials Online Portal



Dear students and parents,

The Melbourne Tutorials online portal has been created to improve exam competence and confidence in our students.

Melbourne Tutorials online portal has various topic tests/ quizzes and mock tests.

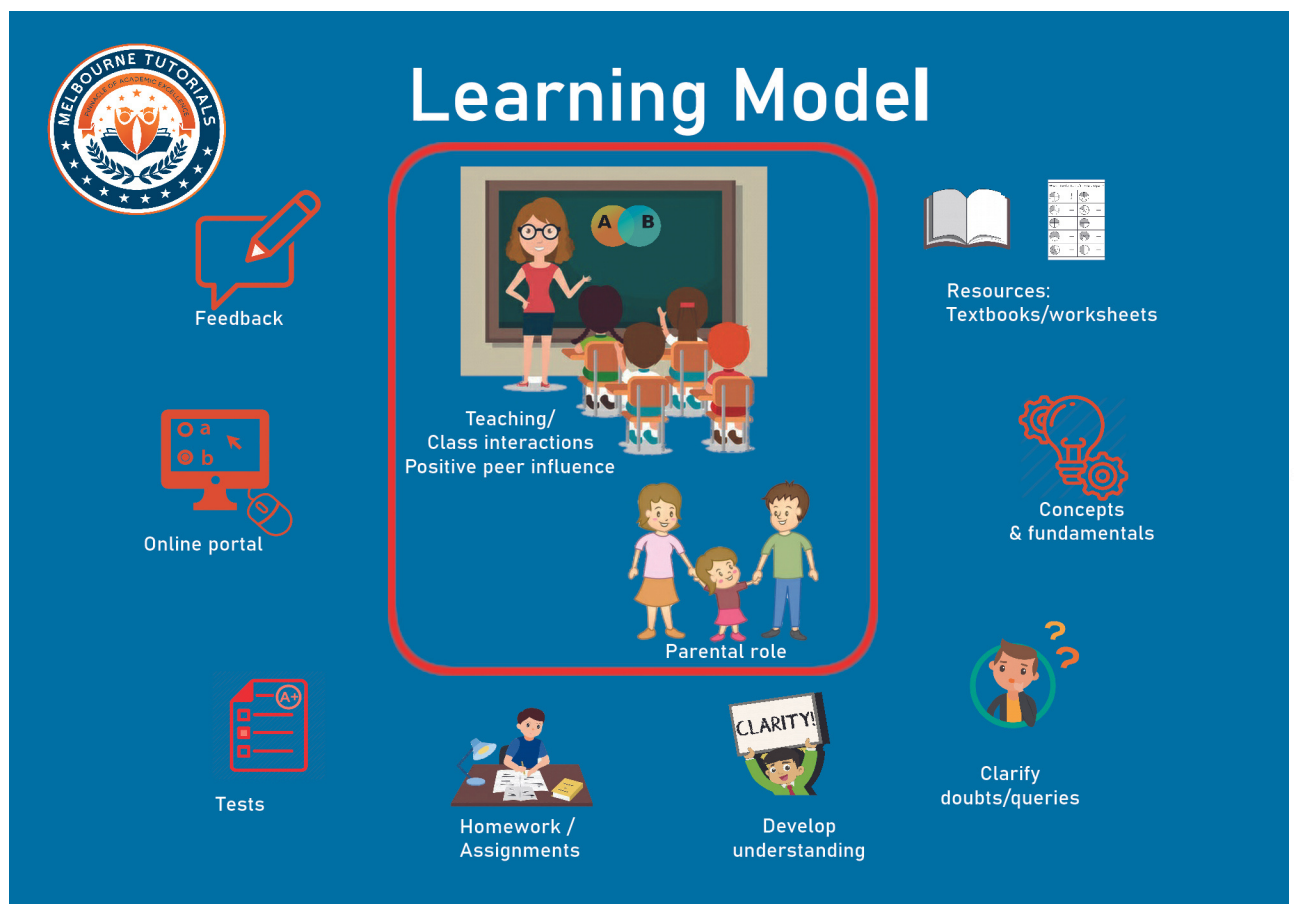
The purpose of these quizzes is to improve speed and accuracy in the various components of Selective Entry and other competitive exams.

The tests are added progressively and students are advised to practise regularly.

Students should take these tests multiple times to gain proficiency.

An eventual score of 95% and above should be aimed at as the desirable outcome.

## Melbourne Tutorials





# Parents' role in their child's studies



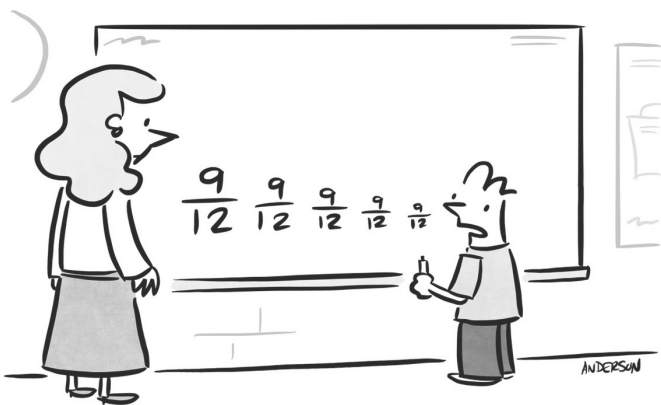
Allocate suitable study space

Help develop organizing skills

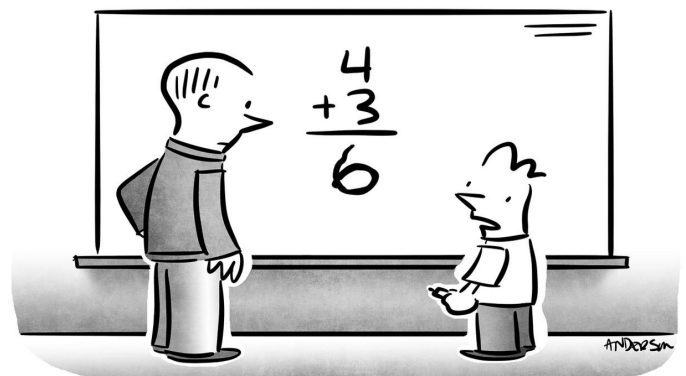
Supervision and association

Study-centric approach

Supporting your child in studies is a priceless investment.



"If I reduce it anymore you won't be able to read it."



"It's a rough draft."



# Melbourne Tutorials Term Dates 2022

**Term 1:** 31/01/ 2022 to 10/04/2022 (10 weeks)

**Term 2:** 25/04/2022 to 26/06/2022 (9 weeks)

**Term 3:** 01/07/2022 to 18/09/2022 (10 weeks)

**Term 4:** 03/10/2021 to 18/12/2021(11 weeks)

---

## Admissions 2022 Term 2



Please complete Expressions of Interest to secure a place in the wait list.

<https://melbournetutorials.com.au/enrollment/>

Appointments by booking only.

Please email [admin@melbournetutorials.com.au](mailto:admin@melbournetutorials.com.au) for booking an appointment.